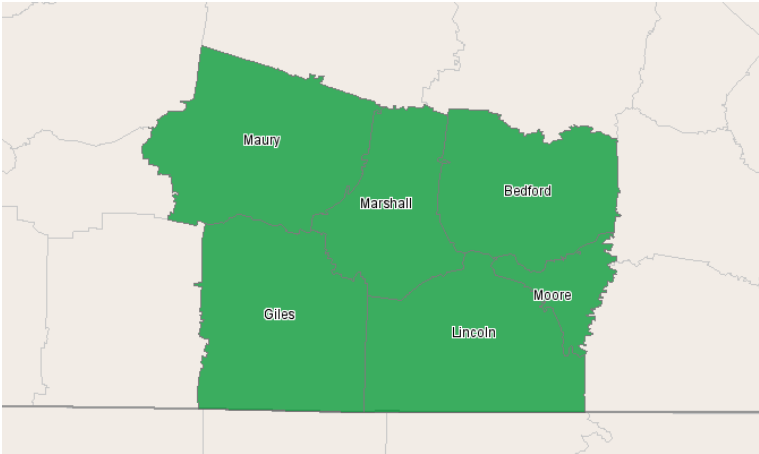


South Central Tennessee Workforce Alliance

8 Courthouse Square
Columbia, Tennessee 38401
931.375.4202

Demographic Overview Report



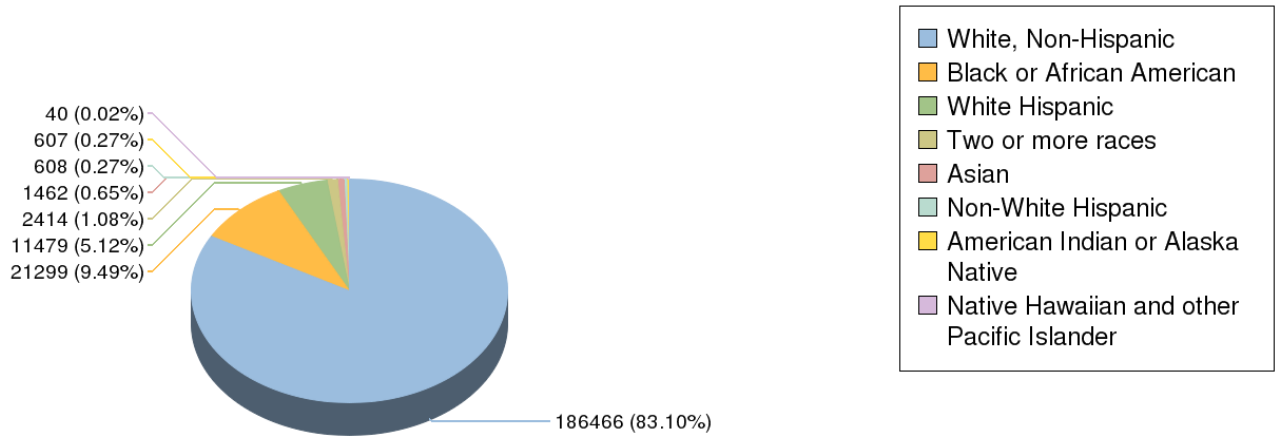
Region Info

Region: Maury & Adjoining Counties

Counties: Bedford, TN (47003), Giles, TN (47055), Lincoln, TN (47103), Marshall, TN (47117), Maury, TN (47119), Moore, TN (47127)

Demographic Overview

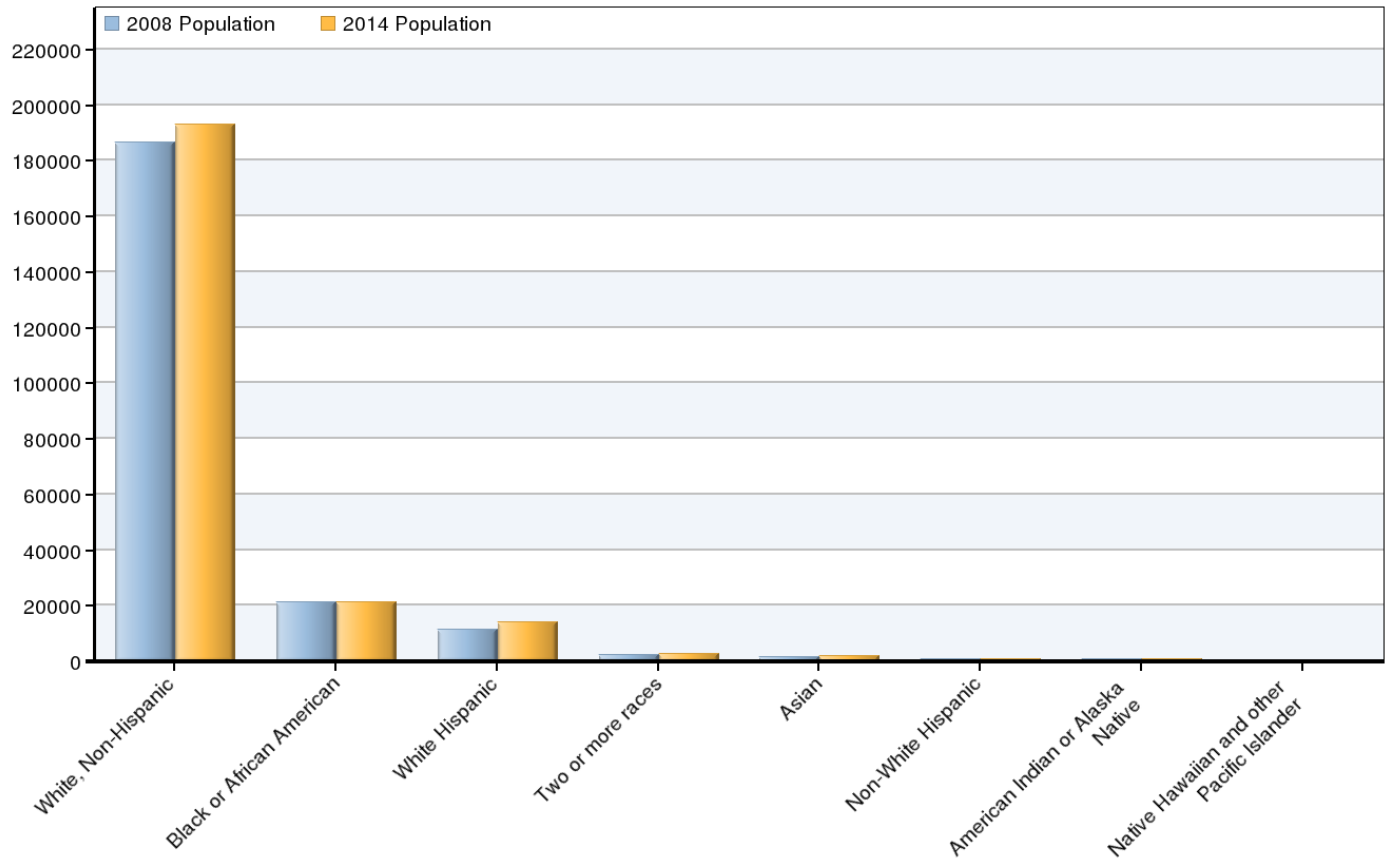
2008 Race/Ethnicity Breakdown



Ethnicity	2008 Population	% of Region
White, Non-Hispanic	186,466	83.1%
Black or African American	21,299	9.49%
White Hispanic	11,479	5.12%
Two or more races	2,414	1.08%
Asian	1,462	0.65%
Non-White Hispanic	608	0.27%
American Indian or Alaska Native	607	0.27%
Native Hawaiian and other Pacific Islander	40	0.02%

Source: EMSI Complete Employment - March 2008

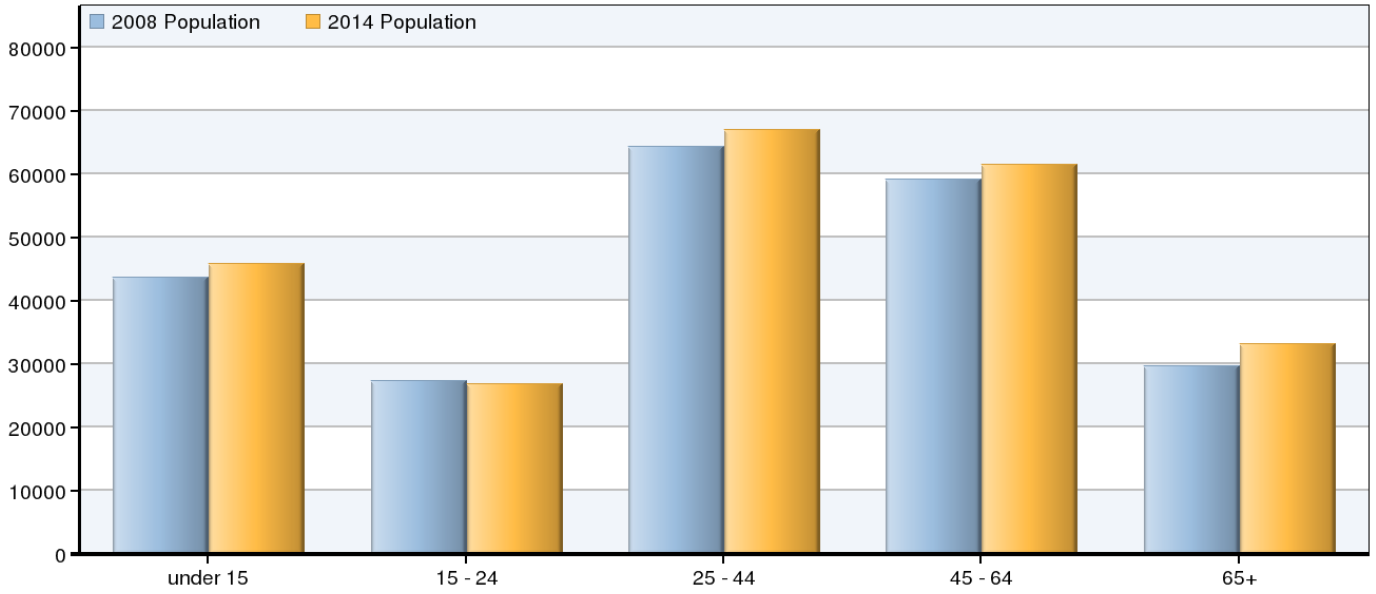
2008 - 2014 Race/Ethnicity Size and Growth



Race/Ethnicity	2008 Population	2014 Population	Change	% Change
White, Non-Hispanic	186,466	193,211	6,745	4%
Black or African American	21,299	21,406	107	1%
White Hispanic	11,479	13,873	2,394	21%
Two or more races	2,414	2,726	312	13%
Asian	1,462	1,790	328	22%
Non-White Hispanic	608	672	64	11%
American Indian or Alaska Native	607	630	23	4%
Native Hawaiian and other Pacific Islander	40	43	3	7%
	224,376	234,351	9,976	4%

Source: EMSI Complete Employment - March 2008

2008 - 2014 Age Size and Growth



Age	2008 Population	2014 Population	Change	% Change
under 15	43,705	45,888	2,183	5%
15 - 24	27,412	26,826	-586	-2%
25 - 44	64,413	66,941	2,528	4%
45 - 64	59,226	61,564	2,338	4%
65+	29,621	33,133	3,512	12%
	224,376	234,351	9,975	4%

Source: EMSI Complete Employment - March 2008

Data Sources and Calculations

Demographic Data

The demographic data in this report is compiled from several sources using a specialized process. Sources include US Census Bureau annual estimates, birth and mortality rates from the US Health Department, and projected regional job growth.

State Data Sources

This report uses state data from the following agencies: Tennessee Department of Labor and Workforce Development, Research and Statistics Division.