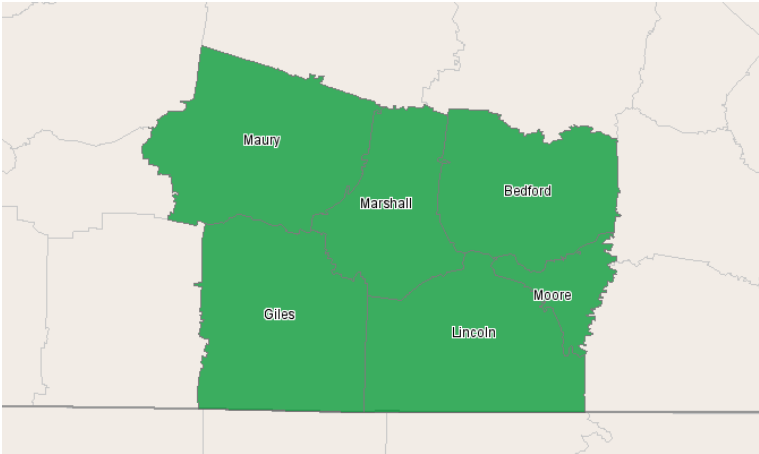


# South Central Tennessee Workforce Alliance

8 Courthouse Square  
Columbia, Tennessee 38401  
931.375.4202

## Demographics Report



## Region Info

Region: Maury & Adjoining Counties

Counties: Bedford, TN (47003), Giles, TN (47055), Lincoln, TN (47103), Marshall, TN (47117), Maury, TN (47119), Moore, TN (47127)

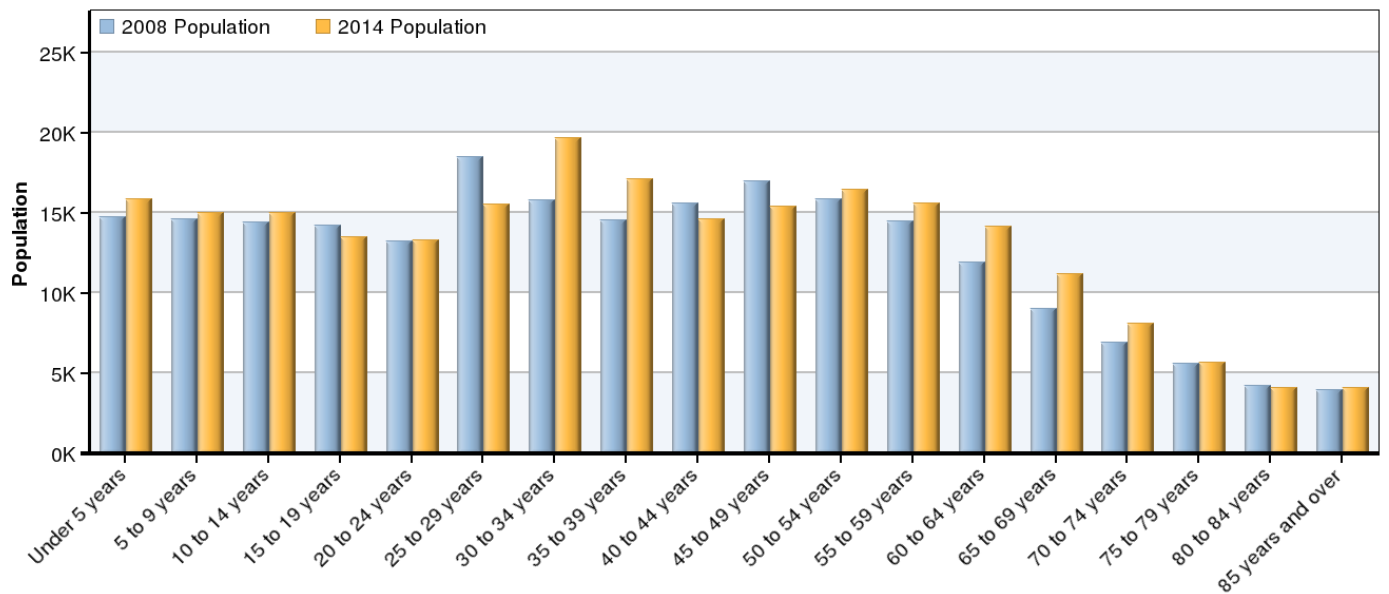
## Selected Demographics

Selected Demographics	Selected Cohorts
Age	Under 5 years
	5 to 9 years
	10 to 14 years
	15 to 19 years
	20 to 24 years
	25 to 29 years
	30 to 34 years
	35 to 39 years
	40 to 44 years
	45 to 49 years
	50 to 54 years
	55 to 59 years
	60 to 64 years
	65 to 69 years
	70 to 74 years
	75 to 79 years
80 to 84 years	
85 years and over	
Race/Ethnicity	White, Non-Hispanic
	White Hispanic
	Non-White Hispanic
	Black or African American
	American Indian or Alaska Native
	Asian
	Native Hawaiian and other Pacific Islander
	Two or more races
Gender	Males
	Females

## Cohort Totals

Area	2008 Population	2014 Population	Change	% Change
Region	224,376	234,351	9,975	4%
State	6,149,022	6,343,394	194,372	3%
Nation	305,330,264	316,029,418	10,699,154	4%

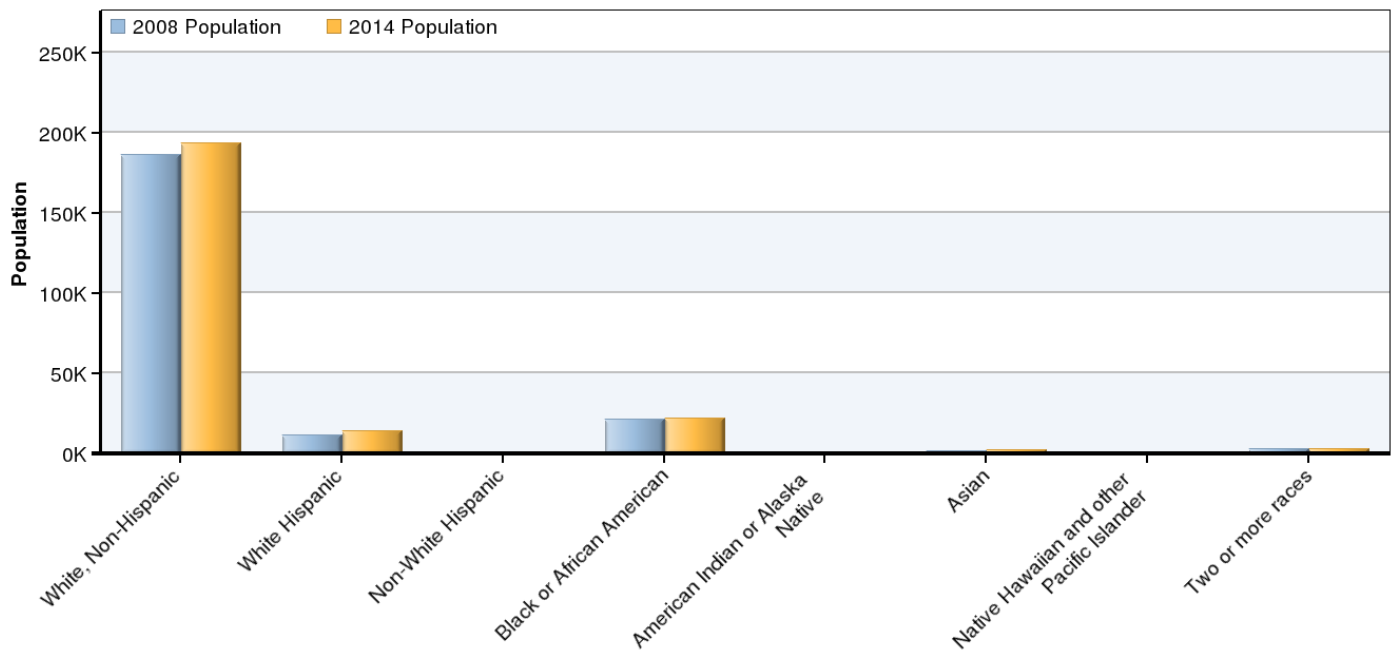
# Age Breakdown



Age	2008 Population	2014 Population	Change	% Change	2008 % of Cohort
Under 5 years	14,714	15,881	1,167	8%	6.56%
5 to 9 years	14,601	15,005	404	3%	6.51%
10 to 14 years	14,390	15,001	611	4%	6.41%
15 to 19 years	14,200	13,519	-681	-5%	6.33%
20 to 24 years	13,213	13,307	94	1%	5.89%
25 to 29 years	18,479	15,542	-2,937	-16%	8.24%
30 to 34 years	15,766	19,703	3,937	25%	7.03%
35 to 39 years	14,562	17,110	2,548	17%	6.49%
40 to 44 years	15,606	14,585	-1,021	-7%	6.96%
45 to 49 years	17,005	15,386	-1,619	-10%	7.58%
50 to 54 years	15,857	16,444	587	4%	7.07%
55 to 59 years	14,489	15,596	1,107	8%	6.46%
60 to 64 years	11,875	14,138	2,263	19%	5.29%
65 to 69 years	9,005	11,186	2,181	24%	4.01%
70 to 74 years	6,887	8,073	1,186	17%	3.07%
75 to 79 years	5,572	5,670	98	2%	2.48%
80 to 84 years	4,233	4,096	-137	-3%	1.89%
85 years and over	3,924	4,108	184	5%	1.75%
	<b>224,376</b>	<b>234,351</b>	<b>9,972</b>	<b>4%</b>	<b>100.00%</b>

Source: EMSI Complete Employment - March 2008

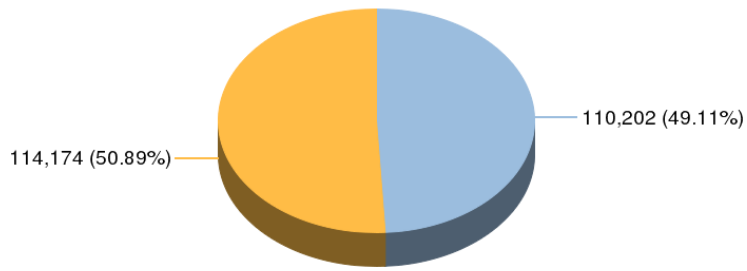
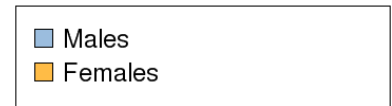
## Race/Ethnicity Breakdown



Race/Ethnicity	2008 Population	2014 Population	Change	% Change	2008 % of Cohort
White, Non-Hispanic	186,466	193,211	6,745	4%	83.1%
White Hispanic	11,479	13,873	2,394	21%	5.12%
Non-White Hispanic	608	672	64	11%	0.27%
Black or African American	21,299	21,406	107	1%	9.49%
American Indian or Alaska Native	607	630	23	4%	0.27%
Asian	1,462	1,790	328	22%	0.65%
Native Hawaiian and other Pacific Islander	40	43	3	7%	0.02%
Two or more races	2,414	2,726	312	13%	1.08%
	<b>224,376</b>	<b>234,351</b>	<b>9,976</b>	<b>4%</b>	<b>100.00%</b>

Source: EMSI Complete Employment - March 2008

## Gender Breakdown



Gender	2008 Population	2014 Population	Change	% Change	2008 % of Cohort
Males	110,202	115,360	5,158	5%	49.11%
Females	114,174	118,991	4,817	4%	50.89%
	<b>224,376</b>	<b>234,351</b>	<b>9,975</b>	<b>4%</b>	<b>100.00%</b>

Source: EMSI Complete Employment - March 2008

## **Data Sources and Calculations**

### **Demographic Data**

The demographic data in this report is compiled from several sources using a specialized process. Sources include US Census Bureau annual estimates, birth and mortality rates from the US Health Department, and projected regional job growth.

### **State Data Sources**

This report uses state data from the following agencies: Tennessee Department of Labor and Workforce Development, Research and Statistics Division.